

Sistem Ekskresi (*Sistem Pengeluaran*)

Untuk kelas 9 Semester 1



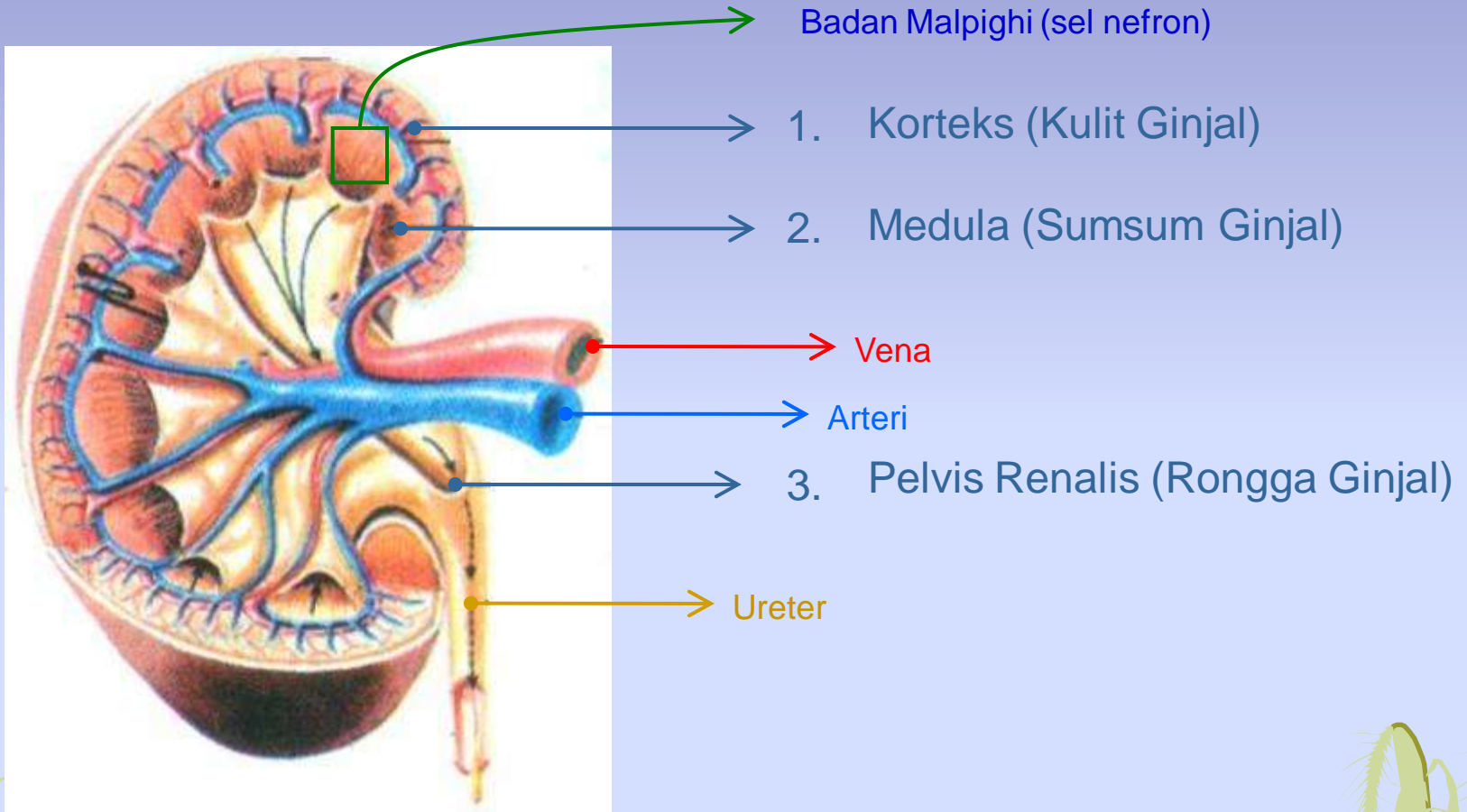
Oleh : Johan, S.Pd

Guru IPA pada SMP Negeri 9 Depok

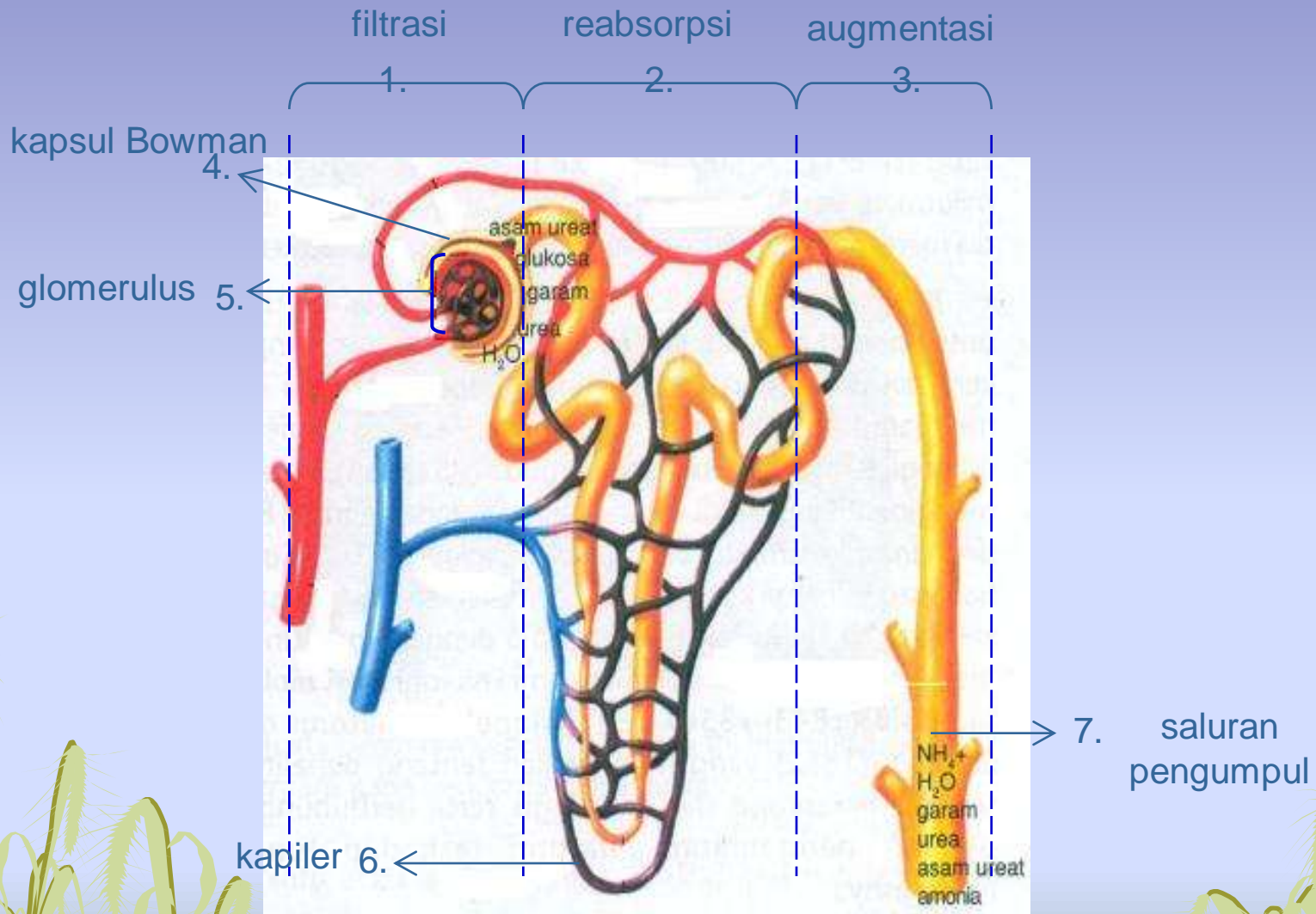
17/10/2009

blog : smpn9depok.wordpress.com

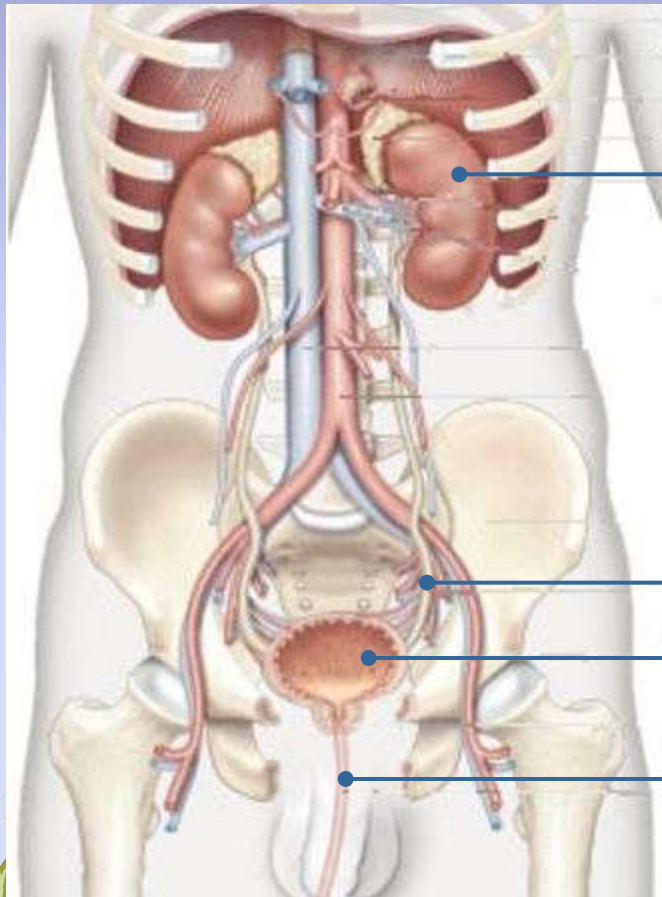
1. Struktur Ginjal



Skema Proses Pembentukan Urine pada badan Mapighi (*Sel Nefron*)



Sistem Uriner



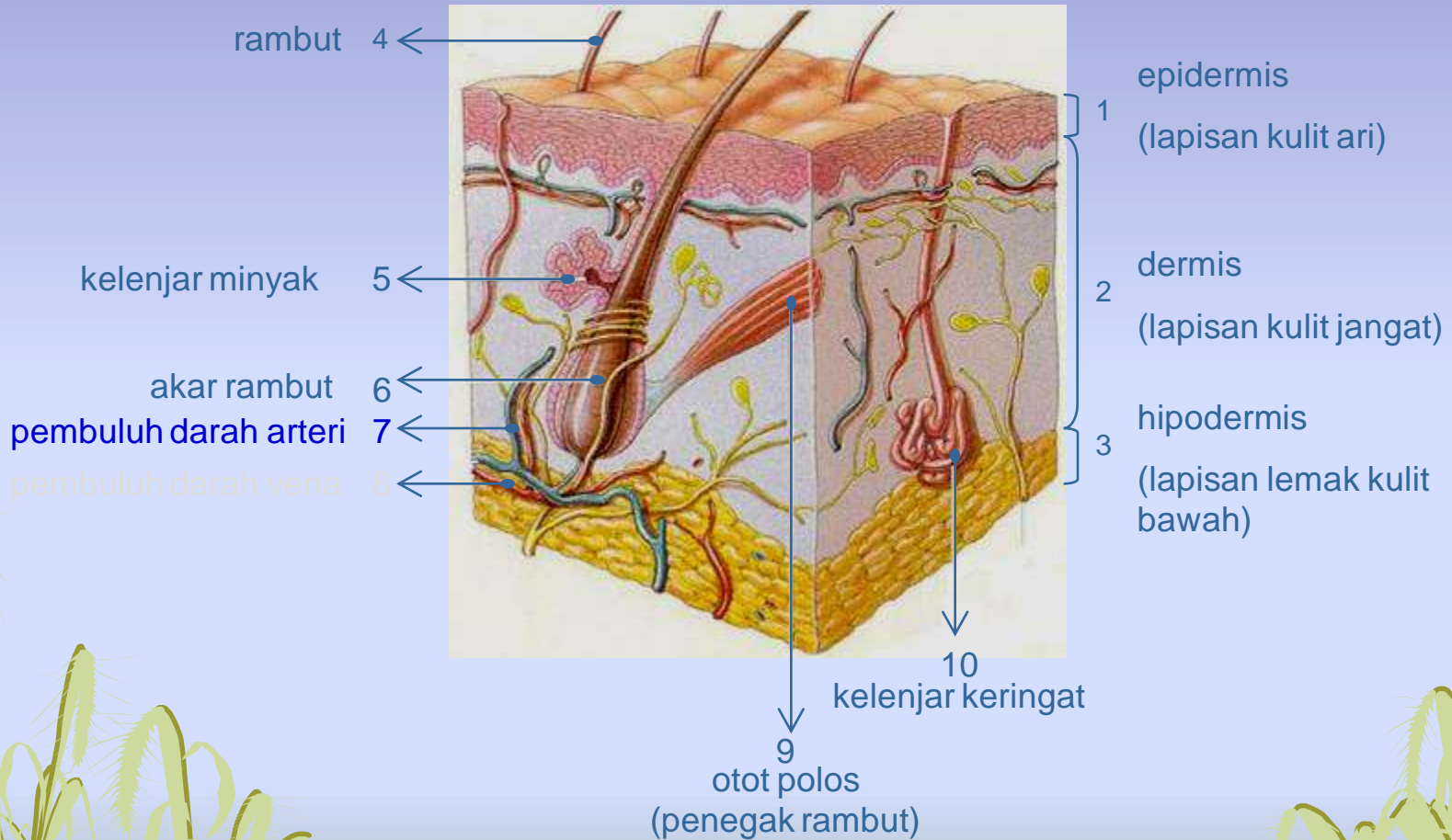
→ 1. ginjal

→ 2. ureter

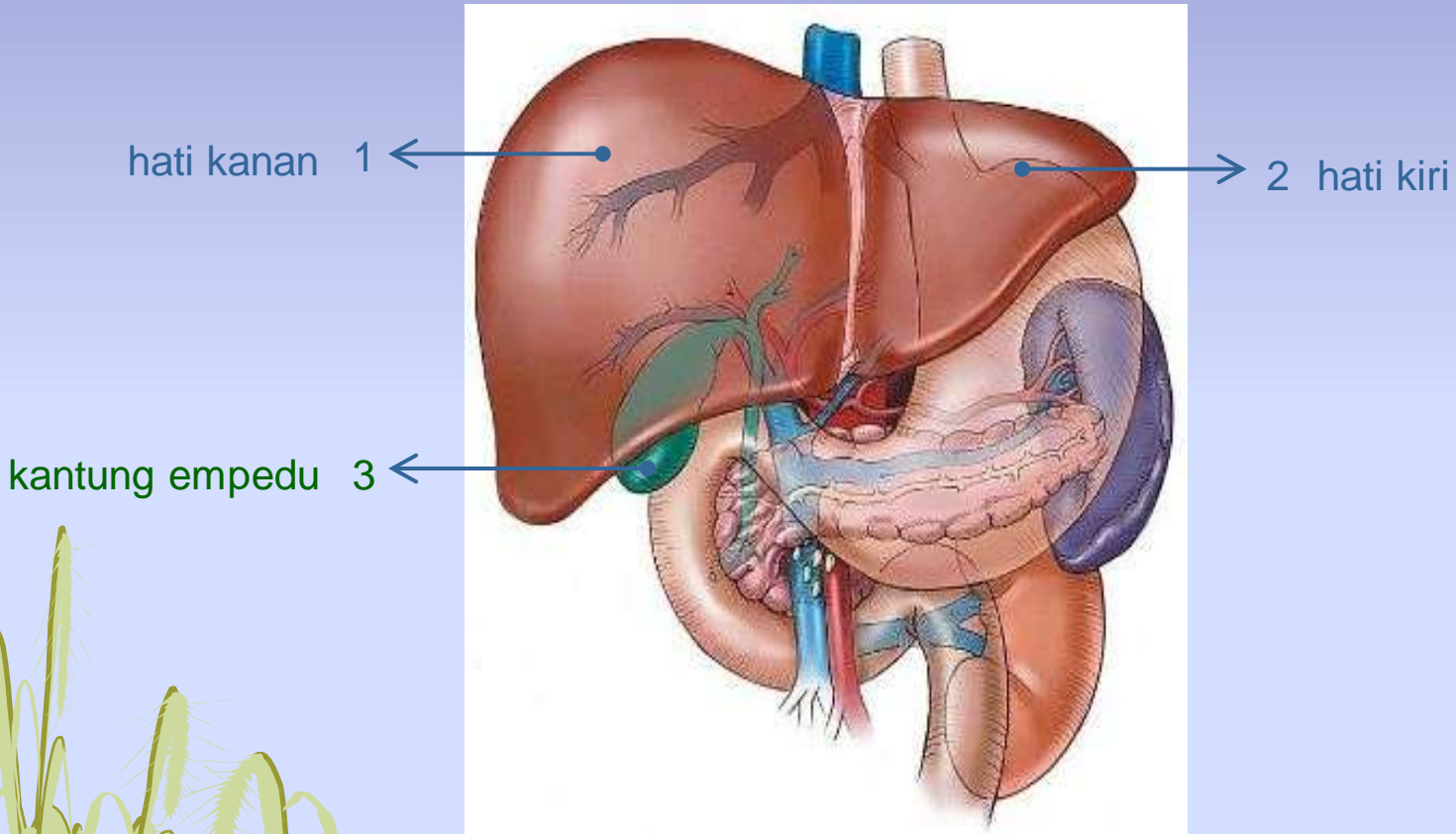
→ 3. kandung kemih

→ 4. uretra

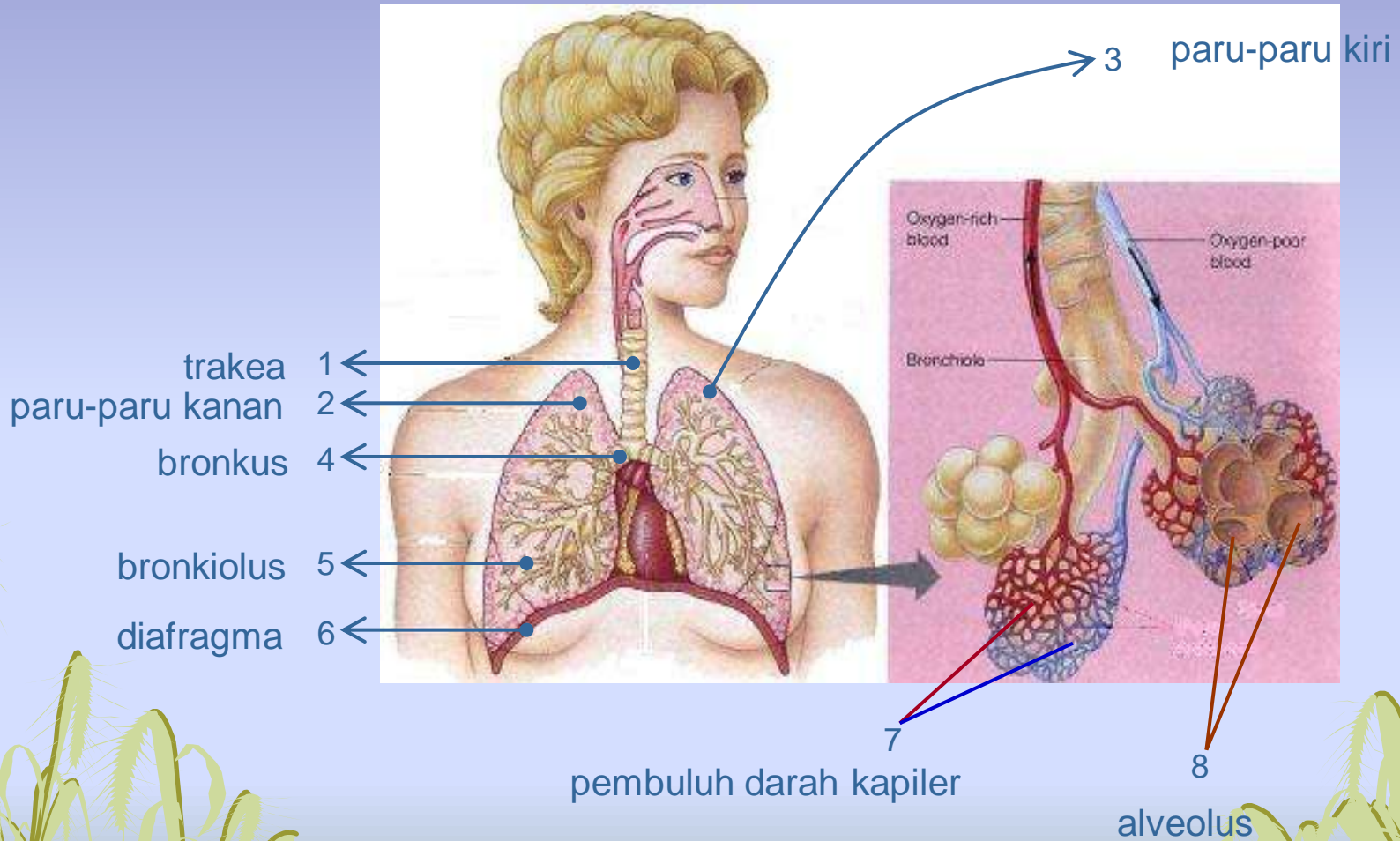
2. Struktur Kulit



3. Struktur Hati

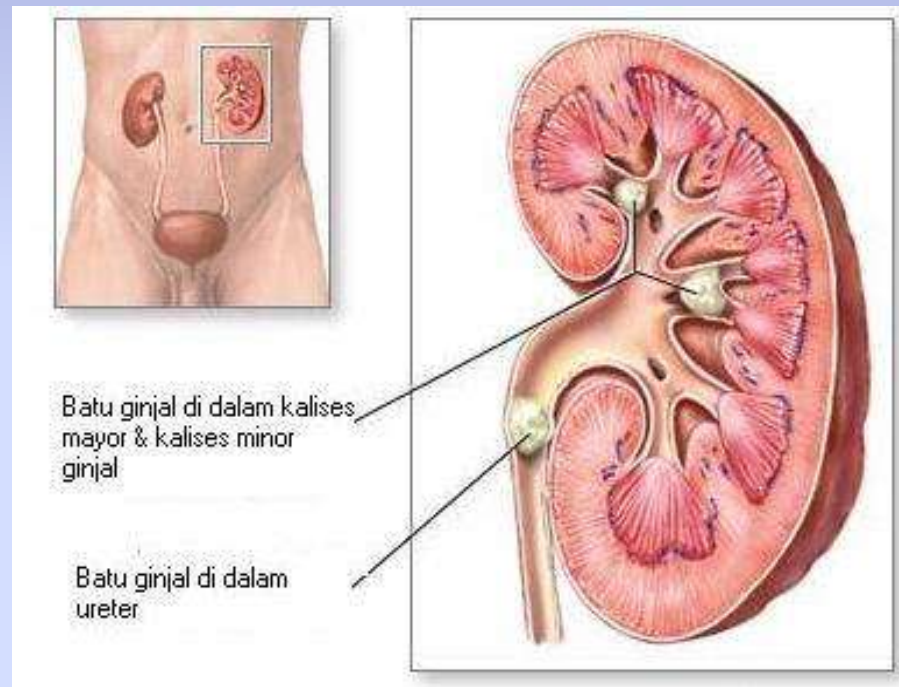


4. Paru-paru



Kelainan yang dialami pada Sistem Ekskresi

1. Ginjal (Kidney)

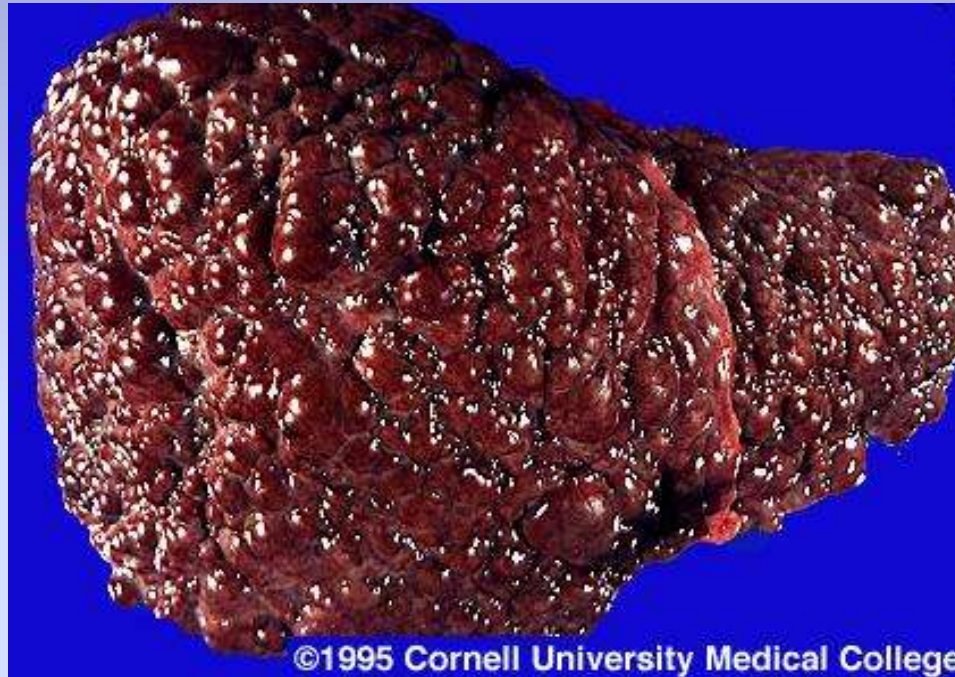


2. Kulit (Skin)



skin-sebderm (kelainan pada kulit)

3. Hati (Liver)



liver cirrhosis (hepatitis B)

4. Paru-paru (Lung)



Terima kasih

17/10/2009

blog : smpn9depok.wordpress.com

12